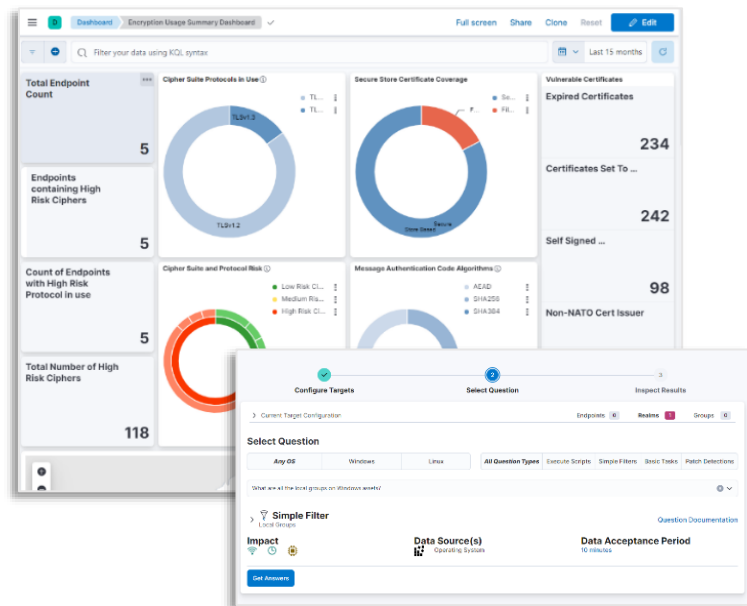


TYCHON

TYCHON Products Overview

The TYCHON product suite offers advanced endpoint analytics and remediation. Our products deliver the 'gold source' for enterprise endpoint data.

TYCHON solutions, designed around the real-world experience of offensive and defensive cyber experts, provide complete endpoint visibility, continuous monitoring, dynamic dashboards, query and response, and more at unparalleled speed and scale.



Products



TYCHON Enterprise

Eliminate blind spots, expose risks, and protect your network with real-time monitoring, historical data tracking, and endpoint query features.



TYCHON Quantum Readiness

Discover, inventory, prioritize, and continuously monitor cryptographic systems to meet government mandated reporting requirements.



TYCHON Agentless

Take advantage of flexible, continuous monitoring with no new infrastructure, designed to interface directly with existing investments.



TYCHON Tactical

For DoD deployed forces, operate in Delayed/Disconnected, Intermittently-connected, Low-Bandwidth (D-DIL) environments.

Key Features



TYCHON SENSOR

Lightweight agent built on a micro service engine framework to optimize integrations and provide superior data quality to fulfill use cases.



MESH MODEL

Instantly query up to a million endpoints. Unique architecture components built for scalability and fast response.



OPEN ARCHITECTURE

Built on an open, flexible framework with embedded micro services built using a Client-Server Model with an integrated journal.



INCIDENT RESPONSE

Instantly respond to threats by executing a cleanup, AV update, and services status check across endpoints in a matter of seconds.



TYCHON JOURNAL

Fully indexed record from every endpoint. Monitor and record endpoint and server activity for near-instant identification of threats.



DYNAMIC DASHBOARDS

Interactive dashboards, which display real-time enterprise compliance metrics for up-to-date situational awareness of network risk.



END USER ENGAGEMENT

A direct line of communication from the incident responder to the desktop of end users.

Comprehensive
& Customizable
Endpoint Datasets to
make better decisions.

